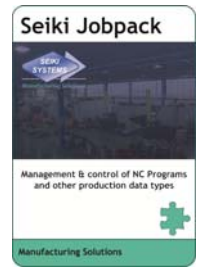




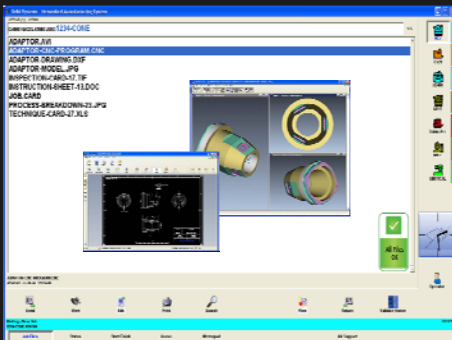
Seiki Jobpack

Seiki Systems has over 20 years experience in the development and provision of CNC communications and NC Program management software. Seiki Jobpack is a robust and complete solution that offers reliable and efficient CNC communication across all CNC resources.



What is Seiki Jobpack?

Seiki Jobpack is a complete shopfloor communications solution designed to facilitate controlled transfer of NC files.



- Easy to use
- Windows based system
- High speed reliable data transfer
- Traceability with a full audit trail of file transfer
- Centralised storage and display of all manufacturing data
- 8 level user access control for file viewing
- Optional display of "work-to-lists" for operators
- Ability to directly view, edit and compare NC Programs
- Links to other factory systems, including PLM, PDM or other database management systems

Seiki Systems Ltd
Olivier House
18 Marine Parade
Brighton
BN2 1TL



T: +44 (0)1273 680411
F: +44 (0)1273 602564
E: sales@seikisystems.co.uk
W: www.seikisystems.co.uk

Optimising production efficiency is key to remaining competitive in the current manufacturing environment. Taking a lean approach to manufacturing means eliminating waste and reducing non-value adding activities for which fast, effective and simple shop floor communications are key.

CNC Communications and NC Data Management

Seiki Systems Jobpack system has been developed for users who require a higher level, easily maintained shop floor communications and NC data management control system.

The software is installed on the server and on each networked PC (via any Windows compatible network). The shopfloor PCs access files or folders stored on the server which are configured in the standard Microsoft Explorer format under machine or part-rev related directory names for each machine tool connected. The system is typically installed on a hardwired RS232 or Ethernet infrastructure, however we are also able to offer a wireless solution, which eliminates the use of long cable runs and offers the flexibility to relocate machines as required.

Seiki Jobpack delivers all manufacturing data directly to the shop floor and can be used by machine operators to navigate for files on a remote server, access all NC program files, and can be configured to meet requirements specified in quality or operating standards to ensure complete compliance. Additional functionality includes the viewing, editing and manipulation of unlimited file types (based on user access privileges), graphical status verification and a comprehensive audit trail log.

Jobpack Manager forms an integral part of the Jobpack solution. This office based software provides an administrative tool kit for the management and control of NC Programs, including file status and approval, assignment of user access privileges and generation of traceability reports. This type of systematic control of manufacturing data can underpin your internal quality control procedures.

The Jobpack Manager toolkit includes the Seiki NC Editor which enables NC programs to be easily compiled/edited. The Editor simultaneously displays files to enable quick line by line comparisons to be made. Proven blocks of code can be easily transferred to create new NC programs and a library facility can also be used to store standard blocks of code for start up, tool changes, etc, ready for rapid input.



Creating an immediate, visual and dynamic picture of the entire manufacturing process



Seiki Jobpack software is available as a stand alone solution or as an integral part of the Seiki NMS system
Packages include:-

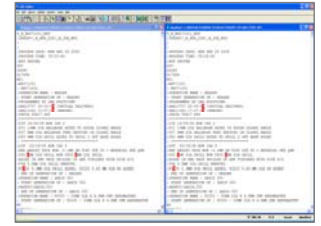
- Seiki Jobpack
- Seiki Monitoring
- Seiki SFDC
- Seiki NMS

The modularity of Seiki software provides manufacturers with a flexible solution and progressive upgrade path.

Manufacturing Control

Control is another key feature of Seiki Jobpack. The system offers:-

- 8 levels of user access control (with password protection) for file viewing and editing (if permitted)
- Graphical file status and control - warning of and restricting access to unproven programs
- Edited NC Program transfer control - all programs in a job folder can be automatically placed on hold until the returned NC Program is approved



Technical Features

- Multi port serial devices enable simultaneous requests from each CNC
- Each Seiki Jobpack installation will support up to 255 machines

Note: Supports RS232, Ethernet and data server communications. Up to 8 CNCs can be supported by a single PC terminal.

System Customisation

System customisation is available through the Seiki Batch Script (SBS) facility, a powerful yet simple tool that provides the ability to easily tailor the system to meet individual customer needs. This approach means that the core software remains unchanged and is easily supported and upgraded, leaving the customised element intact for the particular application only.

SBS can be used to sequence any system operation that can be activated via a configurable command line. It can be used to access and manipulate data with the system software. When used specifically with Seiki Jobpack a customised script for accessing the CNC Editor can be compiled. This can include customisable prompts, such as 'who' and 'why', before the Editor is displayed and then 'what changed' after editing the file. The Editor changes will the only be retained if these prompts are completed and the 'prompt' replies can be automatically appended to a 'change log' text file.

Alternative DNC Solution

Seiki Direct DNC is an alternative solution for companies that require access to NC Programs without the need for any DNC terminals or PCs sited next to the machine tool. DDNC uses the CNC screen to call programs to the machine tool and return edited programs.



Seiki Systems Ltd
Olivier House
18 Marine Parade
Brighton
BN2 1TL



T: +44 (0)1273 680411
F: +44 (0)1273 602564
E: sales@seikisystems.co.uk
W: www.seikisystems.co.uk



Creating an immediate, visual and dynamic picture of the entire manufacturing process