



Seiki NCPM

Seiki Systems has over 20 years experience in the development and provision of CNC communications and NC Program management software. Seiki NCPM uses Microsoft Windows Explorer® for file management and selection and offers bi-directional transfer of NC programs via the computer's RS232 interface, which is configured for each machine tool. Seiki NCPM is comprised of three separate modules; NC Text Editor, Communications Configuration and Transfer.

NC Text Editor Module

The Seiki NC Editor enables NC programs to be easily compiled/edited, it provides the following features:

- Insert/replace characters
- Move/copy blocks of code
- Insert/append data
- Search facility
- Mass substitution
- Block re-numbering via user configurable settings
- Re-numbering of embedded block numbers
- Re-numbering of slash codes
- Simultaneous display and editing of up to ten files
- Drag and drop between files
- Text compare of two displayed files
- Drag and drop between files
- Clip board with copy and paste between files
- Interactive editing during compare
- Locked scrolling with whole file compare
- Line transfer between compared files (edit acceptance)
- Re-synchronisation facility during compare
- Printer output with print preview
- Windows and DOS font selection
- Displays any ASCII text format file
- Display of selected ASCII character
- Configurable tab selection
- Facility to undo last command
- Math package
- Graphical calculation (PCD, triangles, corner rad)
- Drag and drop from graphics library
- User defined library creation (feature programming)
- Variable programming facility (parametrics)
- Macro expand facility (user programming)
- Configurable password protection
- User definable colour selection

Communications Configuration Module

This module enables the RS232 communications for each machine tool to be configured and stored in memory, ready to be quickly and easily recalled for use when required. The configuration also includes the selection of an icon to represent the machine tool which is then displayed when called. The configuration software allows the use of any available COMM ports and includes the selection of baud rates, parity, hardware or software handshaking, etc. In addition special protocols are available including binary transfer.

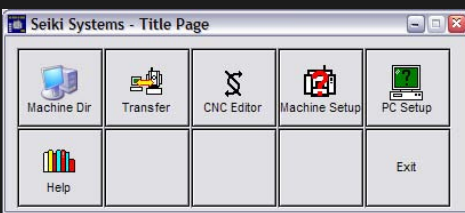
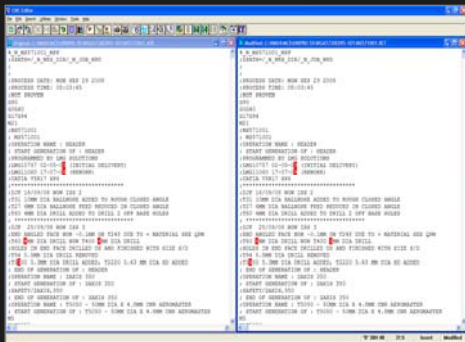
Transfer Module

NC programs can be transferred either to and from the Seiki Text Editor or to and from Windows Explorer®. In each case the machine tool is selected from the menu (created in the Communication Configuration Module) together with the required file to be transferred. The complete requested transfer is then graphically represented on the screen for the operator to confirm the transaction. If Windows Explorer® is configured to have a "proven" and "returned" directory for each machine tool, the programs can be transferred via these directories and the NC Text Editor can be used to compare the differences prior to acceptance of returned programs.

Seiki NCPM can be used to drip feed long NC files. This requires the correct setting of handshakes, etc, in the configuration module and in this event the size of this file is only limited by the disk capacity.

What is Seiki NCPM?

The Seiki NC Program Manager software enables users to create, manage, edit and transfer NC part programs in a Microsoft Windows™ environment.



- Dedicated NC Editor
- Incorporating advanced NC features
- Clip board transfer between simultaneously displayed NC files
- NC program transfer via RS232 interface
- Easy user definable RS232 interface stored for rapid recall
- Program transfers via graphical user interface
- Uses standard Window Explorer for file storage

Seiki Systems Ltd
 Olivier House
 18 Marine Parade
 Brighton
 BN2 1TL
 T: +44 (0)1273 680411
 F: +44 (0)1273 602564
 E: sales@seikisystems.co.uk
 W: www.seikisystems.co.uk



Creating an immediate, visual and dynamic picture of the entire manufacturing process