

Keep In Touch




Manufacturing Solutions


Visit our website at:- www.seikisystems.co.uk


V4.36 - new release


Customers can now look forward to the release of the latest version of Seiki software V4.36 early in the new year.

Just some of the new features include:


 The maximum number of files limitation per folder has been removed.


 It is now possible to use images of machine tools in the place of single colour icons.

 General speed enhancements have been included to improve user experience.

 The overall appearance of the

screens has been enhanced through upgraded icons and images.

 Install and update procedures have been simplified, eliminating the need for multiple software discs.

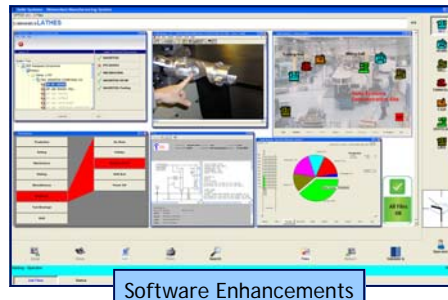
 An automatic power off status has been implemented.

All companies with current maintenance contracts are entitled to this upgrade at no additional charge. We will notify you as soon as the V4.36 becomes available and you will be given the option of either downloading the software or requesting a CD version.

Welcome



We are delighted to be welcoming Charlotte Hill to the team. Charlotte joined the company in November as an Administration/Marketing Assistant.



Software Enhancements

Season's Greetings

We would like to take this opportunity to wish you all a very Merry Christmas and a prosperous New Year. Seiki Systems will be closing on Monday 24th December until the 2nd January 2008.

Merry Christmas

&

Happy New Year

from all the staff
at

Seiki Systems Ltd



INSIDE THIS ISSUE:

V4.36

New Staff

Season's Greetings

Calendar Settings for 2008

MACH Reminder

Integrated Hydraulics

Contact Us

Irish Manufacturing Show

JCNC Ltd, our exclusive distributor in Ireland, had a very successful Irish Manufacturing Show on the 7-8 November 2007 in Dublin. The show attracted a higher attendance than in previous years and generated a lot of interest in the Seiki Systems product range, particularly in DNC systems.

JCNC Ltd is a new company to Ireland, bringing over 25 years of engineering experience within the manufacturing industry. James Fletchmoore set up the company in August with the aim of providing full engineering support to the Irish market. Consultant Engineering Solutions are available from JCNC including, Application Engineering, CNC Programming, Programming Courses, Sub-contract programming, Operator Training and Turnkey Projects. Representing Seiki Systems in Ireland JCNC provides all training, installation and technical support.

Email: jcncltd@eircom.net

Integrated Production

Production at hydraulic valve specialist Integrated Hydraulics is strictly due-date led with output geared to meet order targets. Before the introduction of the Seiki Scheduler the process of tracking a job down where a job was on the shopfloor used to take an average of 30 minutes of valuable management time.

Outlined Tony Cave, senior production engineer, "Following the implementation in September 2006 of the Seiki Scheduler, which was fully interfaced to our Sage Line 500 MRP system and the existing Seiki Networked Manufacturing System (NMS), the internal phones have almost stopped ringing as people requiring production information now have live terminal access to the exact state of play."

Through the Scheduler a colour coded planning board for each machine communicates current production information in a bar presentation format over the 24 production hours available each day and creates the actual and future machine loading. Holidays, planned maintenance and setting time are included and any changes that influence the flow of work are immediately identified to provide a warning and live update of any roll-on effect of the scheduled work in the form of delays. With the previous planning board system data was input manually and any immediate problems were satisfied with the work being shuffled to try to meet targets. However, this had little regard to longer term repercussions and resulted in the moving of problems further down the line. Today, anyone who needs to know can see, within one minute the exact state of production and even the sales team has the facility to check online to know exactly where any customer order fits into the 'due-date' schedule.

The full integration of NMS to the Scheduler provides the vital link to traceability due to its factual reporting system. Integrated Hydraulics knows the CNC program used on any job when it is returned from the machine via DNC where it is then compared to the original download to check any changes made.

The development of the system is still progressing and here the modularity of the Seiki System software is able to support the growth of the company. For Integrated Hydraulics the next stage is to build into the system subcontract operations to track, record and monitor the processes in the same way as internal production is recorded. As a result, important information will be provided for management decisions to either outsource uneconomic tasks or draw back in-house operations that need tighter control.

NMS 2008 Calendar Settings

An important reminder for all NMS users - at the start of January you will need to configure your calendar for the year ahead (radio buttons allow you to view and edit the calendar shifts for last year, this year and next year). You will need to set your shift times for the new 'Next Year' which will be 2008 or 2009, depending upon how far in advance you have already set your calendars.



Procedure:-

Run the program calendar.exe which you can find from the Windows Start button, then Programs > All Programs > Seiki Systems NMS > Office Tools > Calendar.

Select the Default calendar or Machine Specific Calendar as required.

It is possible to configure your standard days by double clicking the coloured boxes on the right hand side and giving them a name/reference, if this has not already been done. Then allocate them to the days in the selected year, by clicking the required standard day and getting the spray can pointer and clicking single days or blocks with the spray can. Any day(s) shown as red in the calendar indicate that this specific day is not a standard working day.

If you are experiencing any problems or require assistance please do not hesitate to contact the Seiki Support Desk (tel. 01273 680411) between 08.30 and 17.00, Monday to Friday or email support@seikisystems.co.uk.

MACH 2008

21st to 25th April 2008
MACH 2008
NEC, Birmingham
Hall 5, Stand 5151



Make sure to register now via the exhibition website www.mach2008.com and keep checking the Seiki Systems website for updates on what you can expect to see on our stand.

Please send me information on: (tick all that apply)

- > V4.36 software
- > Seiki Scheduler/Seiki NMS
- > NMS Calendar Settings
- > Seiki Systems Events
- > Other _____ (please specify)

Name _____

Company _____

Address _____

Postcode _____

Email _____

(Alternatively email: marketing@seikisystems.co.uk)